

# NETWORK ADMINISTRATION USING MICROSOFT® (310)

## REGIONAL – 2014

*TOTAL POINTS* \_\_\_\_\_ (500)

**Failure to adhere to any of the following rules will result in disqualification:**

- 1. Contestant must hand in this test booklet and all printouts. Failure to do so will result in disqualification.**
- 2. No equipment, supplies, or materials other than those specified for this event are allowed in the testing area. No previous BPA tests and/or sample tests or facsimile (handwritten, photocopied, or keyed) are allowed in the testing area.**
- 3. Electronic devices will be monitored according to ACT standards.**

No more than 60 minutes testing time

Property of Business Professionals of America.  
May be reproduced only for use in the Business Professionals of America  
*Workplace Skills Assessment Program* competition.

Answer the multiple choice questions using the Scantron scoring sheet provided. Write your contestant name, along with the contest number on the scantron sheet. **(10 pts. each)**

- 1) Which command-line utility allows you to view current, incoming and outgoing network connections?
  - a) NETSTAT
  - b) PING
  - c) IPCONFIG
  - d) ROUTE
  
- 2) You are the network administrator. The network consists of a single Active Directory domain named demo.com and a single subnet. All servers run Windows Server 2008. The network contains 150 client computers and 16 servers. All computers on the network use the 10.10.0.0/16 address scheme.

Bill, your manager, instructs you to place the 16 servers into a separate subnet that uses the 192.168.10 public addressing scheme. You must plan for a maximum of 30 servers in the future. You need to configure a new subnet mask. The subnet mask must allow a sufficient number of IP addresses for the existing servers and future growth. However, you want to conserve addresses as much as possible.

Which subnet mask should you use?

- a) 255.255.255.224
  - b) 255.255.255.240
  - c) 255.255.255.248
  - d) 255.255.255.252
  
- 3) You manage a network for a small company that is on a workgroup. Users are complaining that they have to wait a long time for their print jobs to finish. You decide to configure a print server using Windows XP Pro and attach a local printer to the computer. You share the printer and add it to each of the workstations.

How many users will be able to connect to the printer simultaneously?

- a) 4
- b) 6
- c) 10
- d) Unlimited

- 4) You are the senior helpdesk technician for CrazyShopper. You install a new printer that is connected to your Windows XP Professional computer and share this printer to the other users in the helpdesk.

The first time you try to print to this printer, the output is several pages of unreadable characters and it seems that the other users are experiencing similar results.

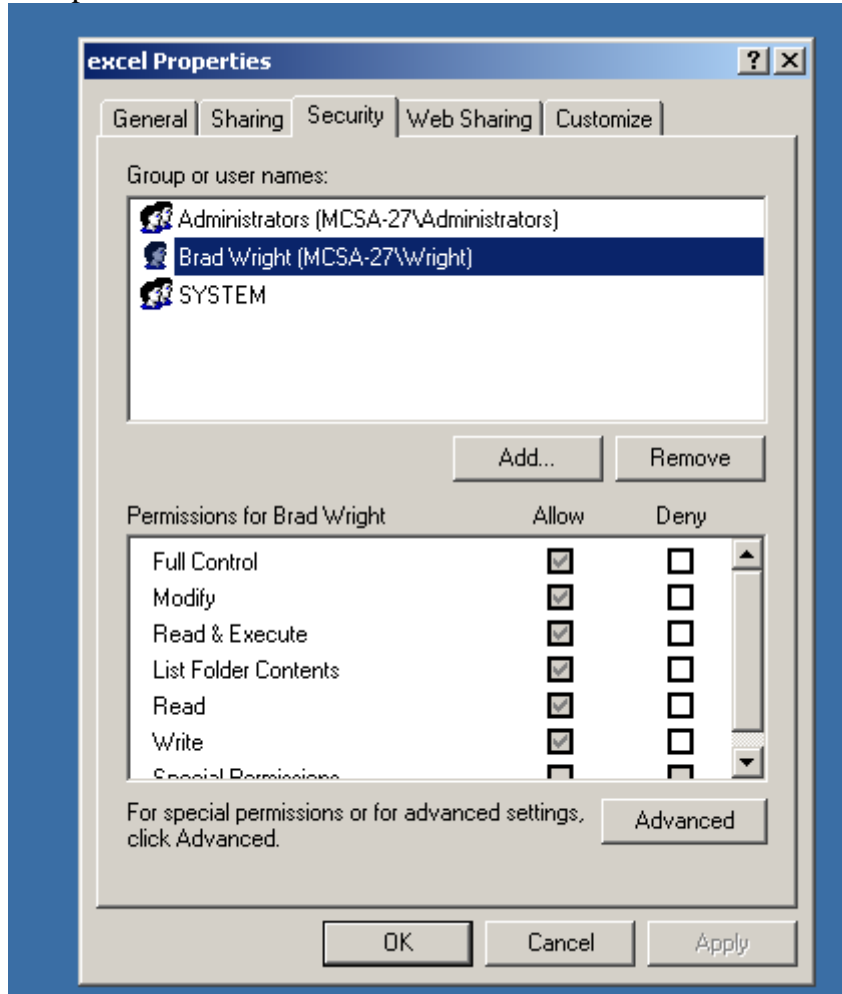
You need to ensure that the appropriate users can successfully print to this printer. What should you do?

- a) Configure the printer to print directly to the print device. Instruct the other users to make the same configuration.
  - b) Configure the printer to use the WinPrint print processor and to use RAW as the default data type.
  - c) Configure the printer to hold mismatched documents. Disable the advanced printing features.
  - d) Run the AddPrinter Driver Wizard to install the correct printer driver on your computer. Instruct the other users to disconnect and then reconnect to your shared printer.
- 5) What program is included with Windows 7 Professional and Windows Server 2008 that can be used to host and manage a website?
- a) IIS
  - b) DHCP
  - c) DNS
  - d) WINS
- 6) What is a USB cable that can be used to connect two Windows computers together solely for the purpose of using the Windows Easy Transfer program?
- a) Direct Connect cable
  - b) Cross Over cable
  - c) Easy Transfer cable
  - d) Roll Over cable
- 7) Which of the following is *not* an NTFS folder permission on a Windows XP Professional workstation?
- a) Read
  - b) Write
  - c) Delete
  - d) Modify

- 8) Which of the following is *not* a way to upgrade Windows 7 editions?
- a) Purchase a retail version of a higher level Windows 7 edition.
  - b) Run the Migration tool from another Windows 7 computer.
  - c) Purchase a Windows 7 product upgrade package from a retailer.
  - d) Use the Windows Anytime Upgrade tool.
- 9) What is the agreement that you have to accept when installing Windows?
- a) Fair rights license
  - b) GNU license
  - c) WinPE license
  - d) EULA
- 10) Which Windows file system allows for encryption, compression and file and folder level security?
- a) FAT
  - b) FAT32
  - c) EXT3
  - d) NTFS
- 11) You are a new helpdesk trainee at TranslucentOrange. You have been assigned the task to deploy a new application to the marketing department. The new application is delivered as an .msi file. You plan to install the application by using the Msiexec.exe program and you need to ensure that the installation process does not display a user interface.
- What should you do?
- a) Manually perform a passive installation of the application.
  - b) Manually perform a quiet installation of the application.
  - c) Use a logon script, to run the Msiexec.exe program.
  - d) Use the Run as utility to run the Msiexec.exe program.
- 12) Windows XP supports how many simultaneous network connections?
- a) 4
  - b) 6
  - c) 8
  - d) 10

- 13) Which type of image contains all of the elements of a workstation configuration, including applications drivers, updates, and all configuration settings?
- a) Thick images
  - b) Thin images
  - c) Full images
  - d) Complete images
- 14) You are the senior desktop administrator for Fruit Palace. You get a phone call from one of your Trainees, who is performing a clean installation of Windows XP Professional on a computer that currently runs Windows 98. He states that the text-based portion of Setup finished successfully. Before the GUI based portion of Setup starts, the computer stopped responding. He investigated and discovered that there is a problem with a device driver. You want to know which device is causing the problem. What should you tell him to do?
- a) Modify the Boot.ini file to include the /fastdetect switch.
  - b) Modify the Boot.ini file to include the /sos switch.
  - c) Restart Setup by using the /dudisable switch.
  - d) Restart Setup by using the /dushare switch.
- 15) Integrating service packs and updates to the Windows installation files is known as \_\_\_\_\_?
- a) Slipstreaming
  - b) Integration
  - c) Combining
  - d) Execution

16) Using the screen capture from below, where would you select to view a user's effective permissions?



- a) The Sharing tab
- b) The Customize tab
- c) The Advanced button
- d) The Remove button

17) You are auditing a Windows XP Professional workstation for failed object access. Auditing is configured on the folder but the event is not showing up in the appropriate log file. What is most likely the cause of this problem?

- a) Auditing is not configured in the local security policy.
- b) The computer is formatted with the FAT32 file system.
- c) The event viewer is not installed.
- d) Disk quotas are not configured properly.

18) What is the default partition style used in Windows 7?

- a) MBR
- b) GUID
- c) NFS
- d) DFS

19) What is the default IP address of the loopback adapter on a Windows 7 workstation?

- a) 127.0.0.1
- b) 192.168.1.1
- c) 111.111.111.111
- d) 0.0.0.0

20) You are unable to connect to any resources on your company network, so you open up a command prompt and type ipconfig. Your workstation indicates that it has an IP address of 169.254.10.1.

What does this mean?

- a) The DHCP server is down.
- b) The network card has been disabled.
- c) Drive C: was converted to FAT32.
- d) This IP address is normal.

21) What is the default subnet mask for the IP address 10.97.2.6?

- a) 255.255.0.0
- b) 255.255.255.255
- c) 255.255.255.0
- d) 255.0.0.0

- 22) You are senior helpdesk technician at Crazy Stuff, Inc. Crazy Stuff developed a custom database application that they use to track sales information. The database application saves its data in files with a .dta file extension in the same shared folder that contains several shared Microsoft Word 2002 documents.

Your manager reports that the application's .dta files are becoming corrupted from time to time. Each time the files are corrupted they must be restored from a tape backup, which is a time consuming process. Users with portable computers often want to have the Word 2002 documents in the shared folder available offline, and you discover that several users also select the .dta files to be made available offline. You suspect that this is the reason the .dta files become corrupted.

You need to ensure that users cannot make the .dta files available offline.

Your solution must not affect user access to the other files in the folder. What should you do?

- a) Use Remote Assistance to disable offline files on the local computer policy of all portable computers.
  - b) Modify the file share that contains the .dta files, and disable offline file caching.
  - c) Ask a network administrator to modify the file permissions on the .dta files to assign all users the Deny Change permission.
  - d) As a network administrator to modify domain security policy to add the .dta file type to the Files not cached domain group policy.
- 23) What enables users to key in a user-friendly name, such as BPA.org, which when resolved, will be converted automatically to its proper IP address?
- a) DHCP
  - b) DNS
  - c) FQDN
  - d) USFG
- 24) Which group type is mainly used to organize user objects into logical administrative units?
- a) Local
  - b) Domain Level
  - c) Global
  - d) Universal



- 25) What is used to specify which bits of an IPv4 address are used for the network identifier and which bits are used for the host identifier?
- a) Default gateway
  - b) Subnet mask
  - c) MAC address
  - d) OSI model
- 26) What must be identical on a Windows 7 Professional workstation to support printer pooling?
- a) The printers
  - b) The printer drivers
  - c) The network cards
  - d) The hard drives
- 27) Two users in the marketing department need to be able to share files and folders with one another. You need to give them the ability to do this with the least amount of administrative effort and without giving them too many privileges. What will you do?
- a) Add each user to the Power Users Group on their respective workstation.
  - b) Give each member a Guest account login.
  - c) Add each user to the Administrators group.
  - d) Reinstall Users and Groups with the Admin Privilege.

- 28) You are the network administrator. The network consists of a single Active Directory domain named VS.com. All network servers run Windows Server 2008. Three thousand client computers run Windows XP Professional, and 1,500 client computers run Windows 7 Professional.

A new employee named Beth is hired to assist you in installing Windows 7 Professional on 150 new client computers.

You need to ensure that Beth has only the minimum permissions required to add new computer accounts to the domain and to own the accounts that she creates. Beth must not be able to delete computer accounts.

What should you do?

- a) Add Beth's user account to the Server Operators group.
  - b) Add Beth's user account to the Account Operators group.
  - c) Use the Delegation of Control Wizard to permit Beth's user account to create new computer objects in the Computers container.
  - d) Create a Group Policy object (GPO) and link it to the domain. Configure the GPO to permit Beth's user account to add client computers to the domain.
- 29) You copy several files from one folder to another folder in a different drive. What permissions do the files in the destination folder have?
- a) The same permissions that they had in the source folder.
  - b) The same permissions that the target folder has.
  - c) No permissions.
  - d) Everyone has full control.
- 30) You administer a Windows XP network that is not on a domain. You are concerned that users may attempt to install device drivers that have not been digitally signed by Microsoft. Which driver signing option will you choose? You do not want them to install unsigned drivers.
- a) Block
  - b) Warn
  - c) Deny
  - d) Allow

- 31) What do you need to do to activate Public folder sharing?
- a) Enable Network Discovery and Public Folder Sharing in the Network and Sharing Center.
  - b) Enable the Public Folder service.
  - c) Right click the Public folder, and select Enable Public Sharing.
  - d) Right click the folder, and select Properties, then Sharing.

- 32) You are the network administrator. A Windows Server 2003 computer is configured as a print server for a print device that has a built-in network interface. Users of the print device report that they cannot print to it. You confirm that the correct IP address and drivers are being used.

You suspect that there is a problem with the MAC to IP address resolution on the print server. You want to find out which MAC address the print jobs are being sent to.

Which command should you run on the print server?

- a) net session
  - b) netstat.exe
  - c) netsh.exe
  - d) netcap.exe
- 33) You and Stephan are helpdesk technicians for HelpNow.com. You install a printer on your Windows XP Professional computer in your office and share it on the company network. You want to ensure that only members of the HelpDesk local group can use this printer and the users should only be able to manage only their own print jobs. But still you and Stephan should be able to manage the printer and all print jobs.

How should you configure security on this printer?

- a) Grant Allow Print permission to the HelpDesk group. Grant Allow Manage Documents permission to your user account and to Stephan's user account.
- b) Grant Allow Print permission to the HelpDesk group. Grant Allow Manage Documents and Allow Manage Printers permissions to your user account and to Stephan's user account.
- c) Grant Allow Manage Documents permission to the HelpDesk group. Grant Allow Manage Printers permission to your user account and to Stephan's user account.
- d) Grant Allow Print permission to the HelpDesk group. Remove Allow Manage Documents permission from the Creator Owner group. Grant Allow Manage Printers permission to your user account and to Stephan's user account.

- 34) You are a helpdesk technician at BitBit.com. You get a call from a graphics designer named Pierre, who has installed a new application and an updated video driver on his Windows 7 Professional computer.

After the installation, Pierre restarted his computer and logged on. However, when he moves Windows and dialog boxes, the display is distorted. You need to ensure that Pierre can run his other applications without video distortion while you look for the correct video driver for the new application.

What should you do?

- a) Use Device Manager to roll back the video driver.
  - b) Restart the computer with the last known good configuration.
  - c) Run the Msconfig utility, and select the /BASEVIDEO check box.
  - d) Use the Add Hardware Wizard to scan for new hardware. Install any found hardware.
- 35) You are a help desk technician for Circuituity.com All computers are installed with Windows XP Professional and connected to the company network. The company network is connected to the Internet via a T1 line. Your computer hosts a Web site that is accessed by other help desk technicians.

You set up a new Windows XP Professional computer at home. The home computer is connected to the Internet via a cable modem that is always on. You are assigned a static IP address from your ISP (Internet Service Provider).

You wish to be able to control your home computer from your office by using remote desktop. However, you want to prevent any other Internet traffic from reaching the home computer. You verify that your company's Internet firewall permits remote desktop connection traffic.

Which two actions should you take? (Each Answer: presents part of the solution. (Choose two)

- 1) On your office computer, enable the Internet connection firewall.
- 2) On your office computer, enable Internet connection sharing.
- 3) On your home computer, enable Internet connection sharing.
- 4) On your home computer, enable the Internet connection firewall.
- 5) On your home computer, enable the Remote Desktop Option in the Internet connection firewall services.
- 6) On your home computer, enable the web Server (HTTP) option in the Internet connection firewall service.

- A) 1,3            B) 2,6  
C) 4,5            D) 6,4

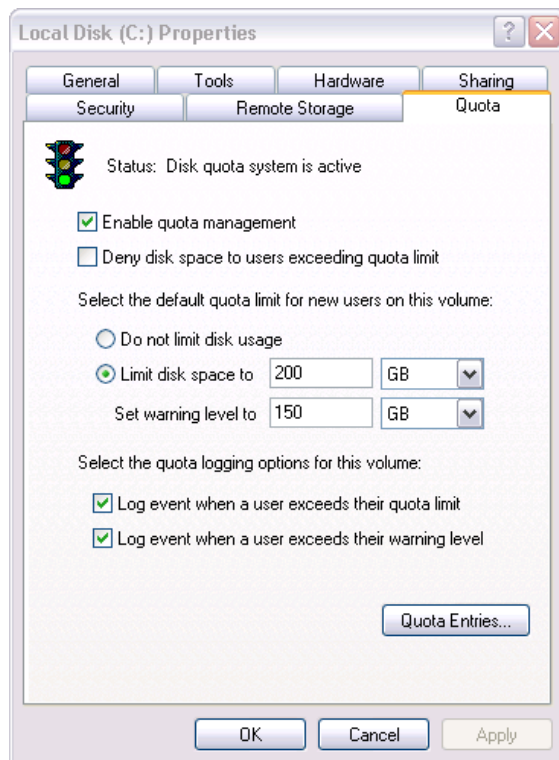
36) What program is used to configure and troubleshoot the Windows 7 startup process?

- a) Performance Monitor
- b) Event Viewer
- c) System Configuration tool
- d) Service Manager

37) Which NTFS folder permission will allow you to delete folders?

- a) Read
- b) Write
- c) Modify
- d) Read and Execute

- 38) Several users in the advertising department share a Windows XP workstation to store data such as reports and brochures. You need to conserve disk space on this computer.



You configure disk quotas as shown in the above capture. Which statement is true regarding your current configuration?

- a) Each user will not be able to save more than 200 MB.
  - b) Users can take up as much disk space as they like; they will only receive a warning.
  - c) Any user now has a limit of 350 MB.
  - d) Disk Quotas are not enabled for this drive.
- 39) You suspect that a user has been making unauthorized access to files on another computer on the domain. What would you most likely audit to track this unauthorized access?
- a) Account Management
  - b) Logon Events
  - c) Object Access
  - d) Privilege Use

- 40) What option is used to make sure a user does not reuse the same password when changing a password?
- a) Enforce Password History
  - b) Maximum Password Age
  - c) Minimum Password Age
  - d) Password must meet Complexity Requirements
- 41) What feature of Microsoft Windows Server 2008 assigns IP address to computers on a domain?
- a) DHCP
  - b) DNS
  - c) Active Directory
  - d) IIS
- 42) You administer the internal Web site. The Web site contains a page that lists the Web development projects in progress with links to each of the virtual directories that are hosted on the Web server. You manage the default Web site through Microsoft FrontPage. All Web developers control the permissions on their own NTFS folders and virtual directories.

Occasionally, users report that the permissions on their folders and virtual directories are reset to the default values. After troubleshooting this issue for some time you find out that this occurs whenever you update the default Web site.

What should you do to resolve this problem?

- a) In the default Web site's properties, on the Server Extensions tab, select the Manage permissions manually check box.
  - b) Change the NTFS permissions on the default Web site to only Allow Read and Allow Write.
  - c) Change the IIS permissions on the default Web site to only Read.
  - d) In the properties for each virtual directory, set the Execute Permissions option to scripts only.
- 43) What is the default port used by http?
- a) 21
  - b) 80
  - c) 110
  - d) 443

- 44) What Windows tool allows you to prepare a Windows XP Professional operating system for imaging?
- a) Setupmanager
  - b) Sysprep
  - c) UDF
  - d) Checkupgradeonly
- 45) Which wireless technology is considered a weak encryption protocol?
- a) 802.1x
  - b) WEP
  - c) WPA
  - d) WPA2
- 46) You need to be able to connect to a shared folder named Accounting on Server1 on your domain. What is the correct UNC path to the Accounting folder?
- a) \\accounting-server1
  - b) \\server1\accounting
  - c) http://accounting
  - d) \\server1\
- 47) Sandy is an accountant at your company. Sandy has Read and Execute permissions to the sales folder. Sandy is also a member of the accountants group that has the Modify permission to the sales folder. What effect does denying Sandy's individual user account permission to the folder have?
- a) None.
  - b) She still has the Read and Execute permission.
  - c) She is denied permission to the folder.
  - d) She now has full control.



- 48) You are a help desk administrator for Emblex, Inc. Eric, an employee in the marketing department, uses a Windows XP Professional computer.

Eric, an employee in the marketing department, often works with a file named Plan.xls on his Windows XP Professional computer. The Plan.xls file is stored in a folder named \\MktFiles\Plans. Eric reports, that initially, he could work with the file when he was out of the office and offline, without copying it to his local hard disk but nowadays he can't open the file when he is out of the office.

You need to ensure that Eric can always access Plan.Xis when he is out of the office and offline.

What should you do?

- a) Instruct Eric to increase the amount of hard disk space used for offline files on his computer.
- b) Instruct Eric to right click the \\MktFiles\Plans\Plan.xis file and select Make available offline from the context menu.
- c) Instruct Eric to open Windows explorer, select Folder Options from the Tools menu, and select the Enable offline files check box on the Offline Files tab.
- d) Instruct Eric to open Windows Explorer, select Folder Options from the Tools menu, and select the Synchronize all offline files before logging off check box on the Offline Files tab.

- 49) How many layers are in the OSI Reference Model?

- a) 3
- b) 6
- c) 7
- d) 8

- 50) An employee of a company that is not on a domain needs to be able to share files and folders. What group should you make that user a member of without giving them too many privileges?

- a) Administrator
- b) Domain Users
- c) Guest
- d) Power Users